

GUMALA NEWSLETTER

Issue: Summer 2023



REACHING FOR THE STARS AND LANDING IN AN ALL STARS TEAM



Earlier this year, the talented Kylah Hansen competed in the Budgies Netball Carnival in Tallebudgera, Queensland. Kylah loves her sport and is also a keen athlete for the Rockingham Districts Little Athletic Centre.

Playing at the Budgies Netball Carnival meant that Kylah was able to compete against some of the best indigenous players from across Australia. Her U14s team, the Western Heat won their final against South Australia as well, it was a big event!

She's a star in our eyes, and she was even selected as part of the Under 13s National Indigenous All Stars team.

Gumala was honoured to be able to support Kylah and her mum to attend the carnival in QLD through our Member Sponsorship program.

Kylah's Mum, Jordan Conway, gave thanks to Gumala for their contribution "We would once again like to thank Gumala for their contribution to get Kylah and me to the Gold Coast, she has had such an incredible experience."

The pleasure was all ours Jordan! We wish Kylah all the best for her future sporting endeavours. If you are a Member and require sponsorship for an event or activity you can visit our website: <https://gumala.com.au/member-sponsorship/>

IN THIS ISSUE:

Changing your career path can be slightly daunting.

Gumala Member Ryall Renouf shares his story about how he has successfully changed his career with the help of our Skills and Development Officer.



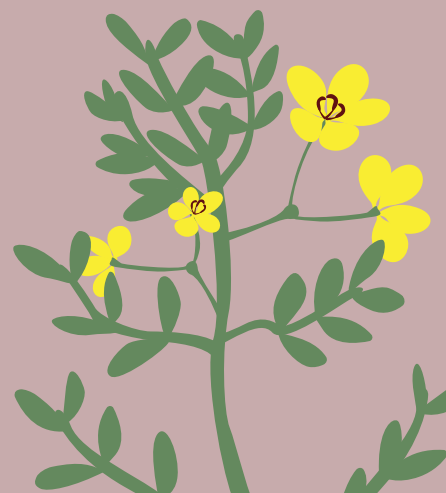
GIPL provide an update on the investments made in the last quarter and we get to know Darcy Campbell. He's joined the GIPL team as their new Administration Support person.



Our 3a Centres have re-opened for the year and the team give us an update on how they're going and where they're located.



Have you applied for the top-up of your flexible and utilities funds? We cover some questions you may have about the funds.



When reading this publication and sharing it with family and friends, please be mindful that it may contain images and/or names of people who have since passed away.

EXECUTIVE OFFICER REPORT



Thannarru,

We are a few months into 2023 now, and it's started off very busy for us here at Gumala. The team have been busy planning for various upcoming meetings for the first part of the year.

Our team is growing and we're recruiting for people across various roles. This is an exciting time for us, as it gives us an opportunity to bring on new talent and expand our service to our Members. If you're interested in joining our team, visit our recruitment portal: <https://gumala.careers.subscribe-hr.com/>

You may have seen we recently announced a 2023 Program Top-Up - \$1500 in Flexi funds and \$500 for utilities. As most of us will already know, these top-ups aren't guaranteed every year but are made available based on accrued income from Yandicoogina Mining. It is nice being able to top-up our Members funds after the Christmas and New Year period.

Our Member Services team received 800 applications in 2 business days during our first week of processing the program top-up applications (we normally receive around 800 in a week). We also took 1 week's worth of phone calls in 2 business days. All of this while continuing to process existing applications for our Members, it's meant a busy week or so.

I'm very proud of our Member Services team for processing a huge volume of applications and I'd like to thank our Members for being so patient as we complete this work.

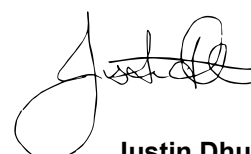
In other news, we're putting together a Gumala Business Register to help us identify potential suppliers and contractors we can use in our business. By collating this list, we're hoping to be able to support local, Gumala Member businesses. At this stage, we'll be using this information within the business for potential engagement highlighted by our strategy.

You will have seen the story on the front of this newsletter about Kylah Hansen, who competed in the Budgies Netball Carnival over East. It's great to be able to support young people doing extraordinary things and it's even better to hear about their journey afterwards! Thanks to Kylah and Mum, Jordan, for sharing your experience with us.

Supporting our Members into employment opportunities is important to us. I'd like to acknowledge one of our Members Ryall Renouf for sharing his story with us in this newsletter. It takes courage to change your career path after so long, and we're honoured to be able to support this change for him. If you'd like to discuss employment and upskilling via training, contact our Employment and Skills Officer, Hayley Obrien: hayley.obrien@gumala.com.au or (08) 9219 4500

The 3a Early Learning Centres are back up and running for the year and I know their induction session was a good place for them to connect with their colleagues, learn about the different centres and set their focus and intentions for the year. If you'd like to learn about the 3a Program and the benefits it holds for our children's development, I suggest heading down to one of the centres or contacting our 3a Program Co-ordinator, Sheryl Hicks. We have put some information in this edition.

Earlier this month we marked the end of Gumala's 25Years which we celebrated after our October 2022 AGM in South Hedland. It was a wonderful experience to share this moment with our amazing Board, Staff and Membership and I am looking forward to bringing in the next phase of our journey.



Justin Dhu,
Executive Officer

THE CHANGE OF CAREER PATH THAT'S PROVIDING NEW, BUT EXCITING CHALLENGES

Hi my name is Ryall Renouf and I am from Perth.

I had been working in the transport industry for about 9 years and had gotten to a point where I needed a change. I wanted a new challenge in my life and decided to try getting a job in the mining industry.

I had been trying for yonks to get my foot in the door but to no avail. Then one day the Skills and Development Officer contacted me and got me interviews with a couple of mining companies with one being FMG.

It has now been around 6 months since I started working for FMG in Port Hedland and I am really enjoying it as they are a great company and look after you. So thanks to the Skills and Development Officer for their help in getting me where I am today!



2023 GUMALA EDUCATION PROGRAMS

The Member Services Team have begun the new year busily assisting Gumala Families to prepare for a new school year.

We have 46 new Gumala Kindy Students embarking on their school journey at big school and we wish them the best as they begin their new adventure.

Reminder if you have children in your care who are attending school, they may be eligible to register for the education program and access support for educational items such as school fees, uniforms, book lists, and even canteen lunches.

The funds available are:

Kindergarten Assistance – \$500

Primary School Assistance – \$2000

High School Assistance – \$2500

TERTIARY ASSISTANCE

If you are a school leaver and thinking about your next steps or thinking about studying, Gumala has a Tertiary Assistance Program that helps to improve the capacity, knowledge, skills and overall education of our Members.

The program provides financial assistance to students enrolled in TAFE or Tertiary courses. Each eligible Member will have up to \$3,500, depending on their level of study:

Cert I or Cert II = \$1,500 limit per Member

Cert III or Cert IV = \$2,000 limit per Member

Diploma, Bachelor degree or above = \$3,500 limit per Member

Please contact our Member Services Team if you would like any assistance with our Education programs.

A WORD FROM OUR 3A CENTRES

Our 3a staff started back in the new year with a staff induction held in Hedland on 27 January. It was an opportunity for 3a staff across the Pilbara to come together, network, share ideas and refresh their knowledge of the 3a program.

All of our centres reopened to families on Wednesday 1 February with a great response in new enrolments and regular attendees. Our centres are open to all Members and any Aboriginal families living in the areas with a 3a centre. We are a free service and engage parents and children in fun play activities that help young children develop school readiness.

Our centres are currently running from the following locations:

Wakathuni Community, Monday to Wednesday – 9.30am to 12pm

Tom Price - North Tom Price Primary School, Thursday and Friday – 9am to 11.30am

Karratha – 10 Hedland Place, Monday to Friday – 9am to 11.30am

Roebourne – Gurlu Gurlu Maya Child and Parent Centre, Wednesdays and Thursdays – 9am to 11.30am

South Hedland – 18 Mooring Loop, Monday to Friday – 9am to 11.30am

Nullagine - Nullagine School, Monday to Friday – 9am to 11.30am

Please contact Sheryl Hicks for more information.

Sheryl Hicks, Gumala 3a Program Coordinator
Email: Sheryl.Hicks@gumala.com.au



GUMALA 2023 PROGRAM TOP-UP

On 27 February top-up funds became available for all Gumala Members.

This top-up included:

- \$1500 for Flexible funds
- \$500 for Utilities funds

Top-ups do not occur every year, and since the GAC Member program relaunched in 2016, the program budget has been funded in arrears. This means we allocate available funds for our programs before the beginning of the current financial year. When we created the 2022/23 budget, the available funds were lower than previous years.

Since then, GAC has received additional funding to be able to provide relief for Members after the Christmas period and bring the Flexible and Utilities balance back to what was delivered in the 21/22 budget

Now that the GAC Board have confirmed the top-up amount, we have been able to let our Members know and have begun taking applications.

THE GUMALA BUSINESS REGISTER

Gumala contracts businesses for a wide-range of services and we would like to collate a list of our Member businesses so we can add them to our business register.

This list will give us the opportunity to support local Gumala Member businesses in our everyday operations.

If you have a business that you would like to add to our business register please email:

Communications@gumala.com.au

with the following details:

- Your name
- Your business name
- Your business phone number
- The type of business you operate

At this stage, we will be using this business register list for internal purposes only.

OUR MEMBER PORTAL

All Gumala Members are able to access their personal information and lodge applications 24 hours a day, 7 days a week via our Member portal. The portal can be accessed via portal.gumala.com.au or via the Gumala website.

On the portal, Members can easily check their balances, lodge applications, check the status of an application, and keep their personal details up to date.

All Members need to access the portal is a mobile phone, tablet, laptop or computer with an internet connection.

Before using the portal, Members should make sure that their personal details are up to date. If there are any changes to an email address or mobile number then Members are encouraged to contact the Gumala office as soon as possible.

To ensure that personal details are kept secure, it is important that Members do not share their phone or email address with anyone which may allow them to access your information through the Member Portal.

You can visit our website and click on the Member Portal How-to videos, or scan the QR code below to read about or watch videos on how to interact with the portal. This can potentially save you lots of time in the long run!

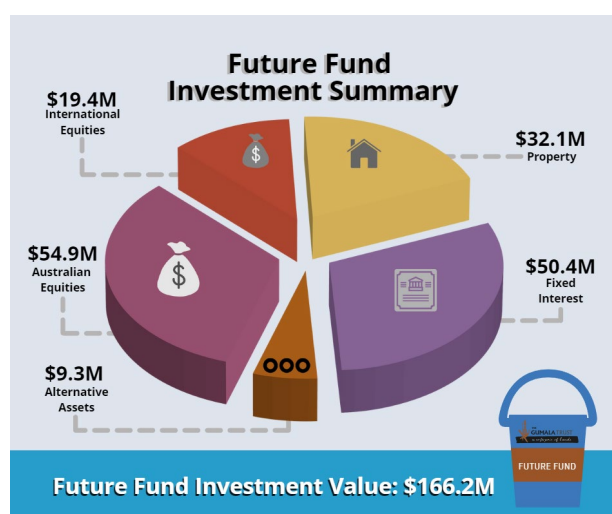


SCAN ME!

TRUST PERFORMANCE UPDATE



The General Gumala Foundation Trust would like to advise the Beneficiaries that as at 31 December 2022, the assets held under Investment totalled \$187.04M, with \$166.21M of those investments held within the Future Fund. After factoring in liabilities, the Future Fund's net value totalled \$168.71M.



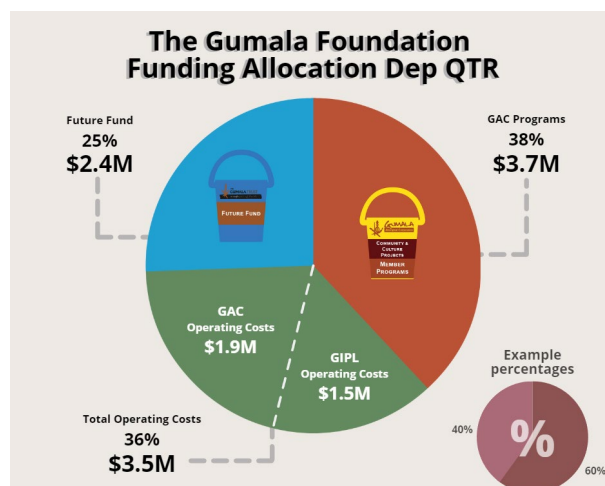
The Investment returns for the December Quarter demonstrated solid performance, with ongoing increases in interest rates delivering higher returns for bonds and term deposits, and dividend and distribution revenue also above budget expectations. Capital values saw a positive gain for the quarter and the year-to-date. However, the overall financial markets continued to be volatile during this period, which has continued into the start of 2023.

Asset Class	Allocation	Within Range?
Australian Equities	20 - 45%	33%
International Equities	0 - 20%	11%
Cash	0 - 5%	0%
Property	20 - 45%	19%
Fixed Interest	10 - 50%	30%
Alternative Assets	0 - 5%	5%

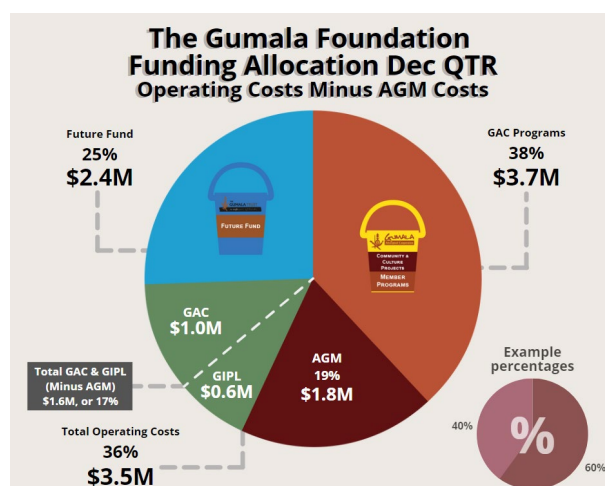
The Foundation added to its property portfolio acquiring more homes for the Gumala Housing Support program. Despite these additional houses,

the overall growth in the total investment fund value means that property still remains slightly under the policy range, at 19% versus the 20%-45% range allocated. However, Alternative Assets have been brought back into the allocated range, at 5%, after being outside the range in prior periods.

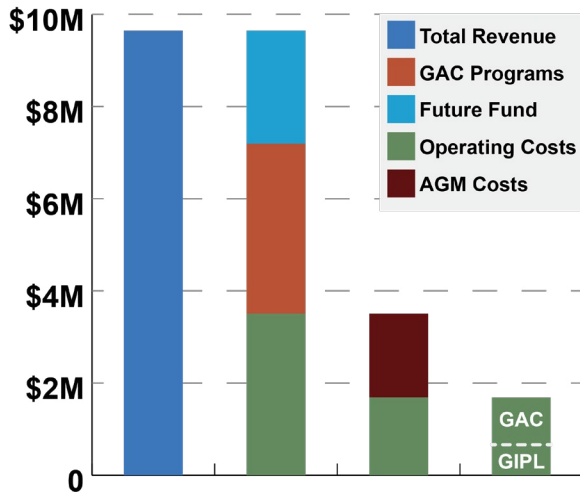
The total revenue for the 3 months to 31 December 2022 was \$9.65M, with \$3.5M spent on GAC and GIPL operating costs. This allowed for \$6.14M, or 64%, to be retained for the Benefit of Members and Beneficiaries, through GAC Member Program Funding and Investment into the Future Fund.



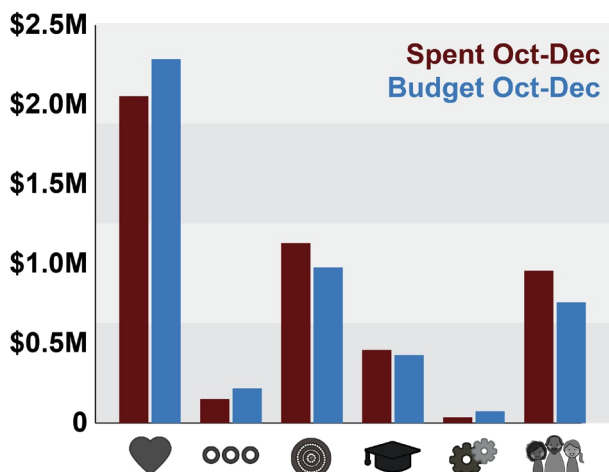
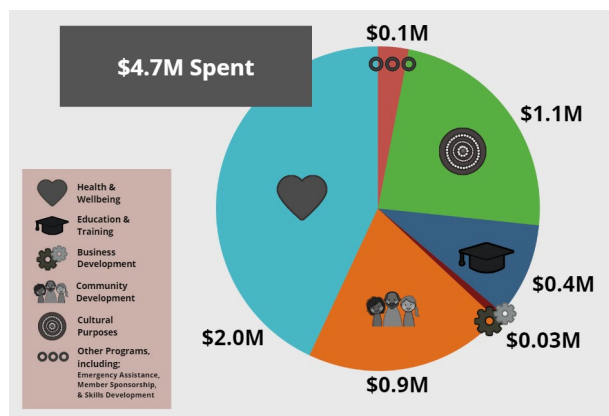
Operating expenses during the quarter were higher across the Foundation due to the costs of holding the Joint AGM and Consultation Meetings in October. The total cost paid towards AGM expenses in the December Quarter was \$1.82 million, with \$1.64 of that amount spent on Member consultation and travel payments.



This total cost is split between GAC and GIPL and is reflected in the operating costs for each entity. After subtracting the AGM costs, total operating expenses for the quarter were \$1.68 Million, or 17%, with \$1.02 by GAC and \$0.66 by GIPL.



Program funding for the December Quarter totalled \$4.79M. The GGF has spent \$10.39M on Program Funding as at 31 December. Certain programs have exceeded budget, however this is due to Members using their flexible program funding.



GIPL NEWS

Our team is delighted to report that we have added another Member to the GIPL Team!



Darcy Campbell has joined us as Administration Support, to help our Property Management & Social Investments Projects Officer, Kate Kershaw, in GIPL's role in the Gumala Housing Support Program.

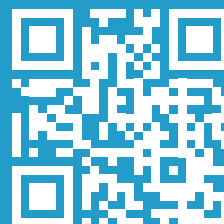
Darcy is a proud young Yamatji-Banjima man. He was interested in working for Gumala to feel connected to, and work closely with his people.

Spending his childhood in Carnarvon, after about a decade of life up North, Darcy moved to Perth with his Mum and little brother.

Outside his role at GIPL, Darcy likes to write, play the guitar and listen to country music.

We're excited to see where his Gumala Journey takes him.

Welcome Darcy!



GET IN TOUCH

Email: gip@gumalatrust.com
 Web: www.gumalatrust.com
 Facebook: [@GumalaTrust](https://www.facebook.com/GumalaTrust)
 LinkedIn: [@gumala-trust](https://www.linkedin.com/company/gumala-trust)

GET IN TOUCH

TOM PRICE HEAD OFFICE: 1 Stadium Road, Tom Price WA 6751
Post: PO Box 28, Tom Price WA 6751

PERTH OFFICE: Level 2, 165 Adelaide Tce, East Perth WA 6004
Post: PO Box 3167, East Perth WA 6892

Phone: +61 (0)8 9219 4500 | **Fax:** +61 (0)8 9188 1846 | **Email:** info@gumala.com.au

Website: www.gumala.com.au | **LinkedIn:** [@gumala-aboriginal-corporation](https://www.linkedin.com/company/gumala-aboriginal-corporation)

Facebook: [@GumalaAboriginalCorporation](https://www.facebook.com/GumalaAboriginalCorporation) | **Facebook (JobsLink):** [@GumalaAboriginalCorporationJobsLink](https://www.facebook.com/GumalaAboriginalCorporationJobsLink)

CLICK OR
SCAN HERE
TO GO TO OUR
WEBSITE!

