

GUMALA NEWSLETTER

October 2020



Gumala proudly continues to support Members who are seeking employment and skills development assistance.

In July, a new program - the Skills Development Program – was introduced to specifically support anyone in the Gumala membership looking for employment or wanting to upskill themselves with the aim of securing employment or advancing their careers.

The program is in addition to the support already offered by our Employment and Skills Development Officer Hayley O'Brien. Hayley has been able to help our Members find work in a range of occupations and has also organised for Members to attend courses ranging from rigging and forklifting to nail technology and physiotherapy.

Three Members who have made the most of this support are Krystal Mills, Jasmine Hill and Sade Hayward who have all joined Gumala in the East Perth office.

While Krystal has taken up a Business Administration Traineeship, Jasmine and Sade have joined the Member Services Team which works closely to support Members seeking assistance with program applications.

Members who are looking for employment may access the Skills Development Program to secure tickets, licences and other training.

You will also be guided and assisted in resume development and career path identification before being offered the opportunity to access funding to cover the cost of training and licences for the identified employment path.

Funding is available to cover costs of training programs, courses and tickets offered by registered organisations in Western Australia. For further details, visit our website at <http://gumala.com.au/skills-development/>

Pictured above are: Sade (left) Krystal (right) and Jasmine (seated).

When reading this publication and sharing it with family and friends, please be mindful that it may contain images and/or names of people who have since passed away.

EXECUTIVE OFFICER REPORT



Thannarru,

We hope that our Gumala Members remain safe and well as COVID-19 continues to play a role in our work and private lives.

The pandemic has changed the way in which we are able to carry out operations; one of those key events being our Annual General Meeting which is normally held in Hedland each year in October.

ANNUAL GENERAL MEETING UPDATE

When preparations for this year's meeting begun, it became apparent that due to COVID-19 restrictions and regulations set by the WA Government, it would be difficult to go ahead with the meeting and at the same time abide by the COVID Safety Plan developed for public spaces like Wanangkura Stadium in Hedland.

Given that our estimated attendance figure for this year's AGM was predicted to be well in excess of 550 people, there were logistical difficulties in requiring staff to ensure attendants adhered to the relevant COVID Safety Guidelines.

Because of this, GAC would like to inform Members that the 2020 AGM and Member's Consultation Meeting with Rio Tinto Iron Ore has been postponed until 2021. Further updates about the exact date will be given in due course.

GUMALA TO EXIT CIVIL CONTRACTING BUSINESS

When the restrictions from the COVID-19 pandemic came into being, Gumala Enterprises Pty Ltd (GEPL), along with other civil businesses working in the mining sector, experienced a loss in the pipeline of work available, making it very difficult to manage the business and plan for the future.

This resulted in GAC, as the sole shareholder of GEPL, removing the Board of Directors in July and stepping in to reduce costs and to restructure GEPL's business in a way that secures the interest of the Gumala people.

GAC commenced a strategic review of GEPL's operations to refocus the business and address the impact the pandemic has had on the company's financial strength and how GEPL ties in with the overall Gumala strategy moving forward.

The review has now been finalised and the result, in combination with a range of other factors, has led GAC to determine that GEPL will close Gumala Contracting and exit the civil contracting business in an orderly manner effective immediately.

GEPL's Tom Price Workshop will continue to be operated and Karijini Eco Retreat (KER) operations are unaffected by this action. KER remains a key focus and asset of the GEPL business moving forward.

RIO TINTO CONSULTATIONS

The Yandi Land Use Agreement (YLUA) review has been completed and some recommendations were formed by an external consultant. GAC is working with Rio Tinto on collaborative actions of the recommendations.

In July, GAC was advised by Rio Tinto that they had identified some discrepancies with the historical payments made under the YLUA.

GAC continues to engage with Rio Tinto in order to confirm the correct amount due but given the lack of clarity over the amount of the discrepancy at this time, no amount has been recognised.

Consultations with Rio Tinto regarding the payment will continue over the next few months and included a site visit to the Yandi mine by the GAC Directors (see below).

A detailed consultation with the Members will take place once the investigation has progressed. We look forward to a positive conclusion and a sustainable partnership model for the future.

**by Justin Dhu
Executive Officer**



MURDOCH STUDENTS ONCE AGAIN BRING CHIROPRACTIC SERVICES TO THE PILBARA



The annual placement of Murdoch University chiropractic students in Tom Price and Paraburdoo was once again supported by Gumala in 2020.

Each year since 2007, groups of chiropractic students and supervisors travel to the Pilbara to provide health assessments and hands-on care to community members and travellers.

Prior to participation, students were required to complete cultural awareness courses to become more familiar with Indigenous culture.

The project has received support from Rio Tinto, BHP, Sodexo, the Shires of Ashburton and East Pilbara, Lestok Tours, Actimed Australia and The Australian Chiropractors Association.



Pictured is the team of chiropractic students from Murdoch University with their supervisors.

This free service is eagerly anticipated by the locals each year when the students visit. Over the years, students have provided around 17,000 health checks and treatment visits.

While chiropractors primarily see people with back pain and other physical problems, they also encourage healthy living, and give advice that improves quality of life and wellbeing.

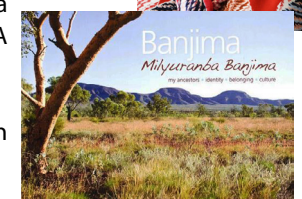
This year, 10 students were supervised by Drs Lyndon Amorin-Woods and Shane Sutherland. Dr Amorin-Woods, who has been involved with the placements since 2007, noted that even though the Nameless Festival was not conducted this year the free clinic was as busy as ever taking care of community members.

CONGRATULATIONS TO GAC DIRECTOR MAY BYRNE

Congratulations to Gumala Director May Byrne who has been named amongst the 15 most inspirational Indigenous leaders in the Pilbara.

May has been recognised for her book, which documents the history of her Milyuranba Banjima ancestors, and for inspiring both Indigenous and non-Indigenous Pilbara residents. Her artwork has also been chosen to go on permanent display in the WA State Art Collection.

May also recently contributed to the 50-word project which aims to education Australians on the diversity of languages nationally. See more details over the page.



3A PROGRAM UPDATES



World Vision's Julie Christine and Gumala's 3a Program Coordinator Suzie Powell, along with Management Support Officer Noreen Derschow, have been visiting 3a Gumala Playgroups in Warralong, Marble Bar, South Hedland, Wakathuni and North Tom Price as part of the World Vision/Gumala 3a training partnership.

They have also met with communities, families and children, consulted with Facilitators to support the implementation of 3a strategies, and supported 3a Gumala Playgroups to begin again.

Over the next few months Julie, Suzie and Noreen will offer 3a training to all of our Playgroup staff as well as complete another round of visits to support each 3a Gumala Playgroup and the families and children that attend.



THANK YOU BYFORD SECONDARY COLLEGE

Gumala's 3a Centre in Karratha would like to give a big shout-out of thanks to Home Economics teacher Stephanie Nash and her Year 12 students at Byford Secondary College.

Stephanie reached out to Gumala to work on a project with her class and following discussions with 3a Program Coordinator Suzie Powell about the importance of language in our 3a programs, as well as the element of Conversational Reading, the Year 12 students designed and created library bags for the children.

The students and school also donated a variety of books for ages 0-5 years and placed these in each of the bags which were then posted to and shared with the 3a Gumala Karratha Playgroup.

The children and families painted a large picture to say thank you to the students.

GUMALA MEMBERSHIP PROCESS UNDER REVIEW

Over the past year, Gumala staff, in conjunction with the Foundation Applications Review Committee (FARC) have been working on a review of the memberships process at the request of the Boards of both Gumala Aboriginal Corporation (GAC) and Gumala Investments Pty Ltd (GIPL).

The review is particularly focused on the way we assess applications for membership and beneficiary status, as well as the eligibility criteria for becoming a Member and Beneficiary.

This review is ongoing and may not be completed for several more months. However, the Boards recognise that in the meantime, it is important to make potential Members aware of the lengthy process of the review, and that during this time applicants may experience delays in the processing of their applications.

Included in the Membership Information section of the GAC website is a flowchart that shows how the current membership process works. We acknowledge that at times this may not apply as each applicant will have unique circumstances surrounding their applications.

The flowchart also clearly shows that if the right type of evidence is not provided with initial applications, the delay in processing for an outcome can also take months.

In these cases, GAC staff will contact the applicants to discuss their applications and advise what else is required of them.

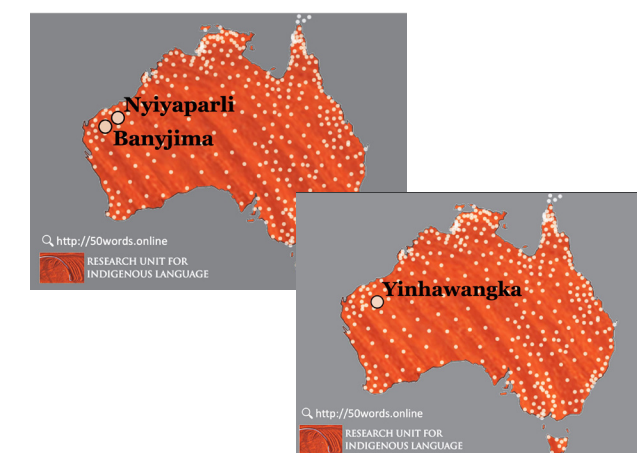
If you are still encountering difficulty when you, or someone who you are assisting, are working through the application process, then please feel free to contact us and speak with our Memberships Team or email memberships@gumala.com.au

We thank you for your patience during this time.

For details, visit:

<http://gumala.com.au/membership/>

GUMALA FAMILY LANGUAGES ADDED TO 50-WORD PROJECT



50 words in the Banjima, Nyiyaparli and Yinhawangka languages have been added to the 50-word project and can now be heard online at <https://50words.online/>

The words have been added by Traditional Owners May Byrne, David Stock and Roy Tommy, with special acknowledgement also given to IBN Corporation, IBN Linguist Annie Cameron, IBN Field Officer Elly Lukale and Logan Simpson from the Wangka Maya Language Centre.

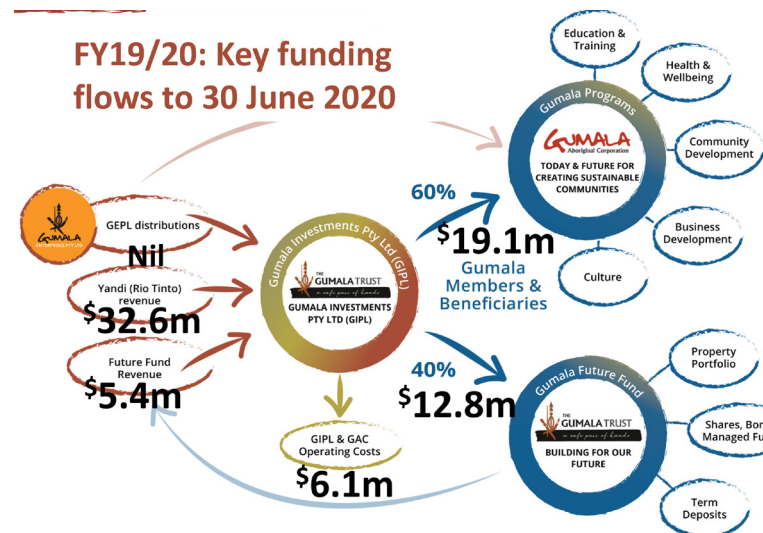
The 50-word project is led by the Research Unit for Indigenous Language at the University of Melbourne, funded by the Duncan Leary Trust for Australian Indigenous Languages.

The project aims to provide 50 words in every Indigenous language of Australia. The hope is that it will be a useful resource for schools and educational organisations to learn 50 words in their local languages, and for the general public to discover the diversity of languages around Australia.

Words are added to the 50 words site as they are received, and the researchers are always asking for speakers of any language that is not already represented to contact them (RUIL-contact@unimelb.edu.au) so they can get their recordings into the site.

For further information see: <http://indiglang.arts.unimelb.edu.au>

GUMALA INVESTMENTS PTY LTD (GIPL)



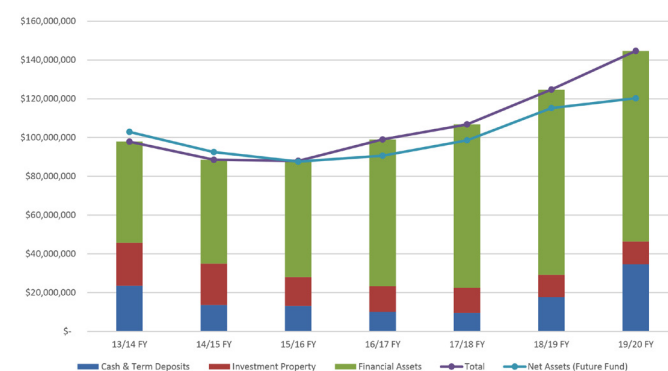
GGF Financial Overview

The General Gumala Foundation Trust wishes to update the Beneficiaries that as at 30 June 2020 it had total assets under investment of \$144.66M, with the Future Fund valued at \$120.27M.

The investment portfolio suffered negatively due to the wide impacts of the Covid-19 pandemic on the financial markets, and world-wide economies, with financial asset values and returns on dividends and interest also reduced.

Total Revenue for the year to 30 June 2020 was \$37.9M with \$31.9M being retained for the benefit of Members and Beneficiaries through available Member Program Funding and Investments into the Future Fund.

GGF Investment portfolio



Supporting Member businesses

GIPL has been working to support one of our Members by locating one of their vending machines at our offices.

Travis Mills, from Mills Vending, began the business five months ago to start a new venture and more importantly, to become financially independent.

If you would like to support Mills Vending by having a vending machine at your business location (Perth Metro) please contact Travis at Tmills29@hotmail.com. Please note, having a vending machine at your premises does not cost anything.



Contact GIPL:
08-9287-3900
gipl@gumalatrust.com www.
facebook.com/GumalaTrust/
gumalatrust.com

MEMBER PROGRAMS AND SERVICES UPDATE

2021 Education program opens soon

Children of registered Members or Beneficiaries are eligible to access our Education Programs (Kindy – Year 12) for the 2021 school year from 1 November 2020.

The 2021 Education Programs provide the following amounts:

- \$500 per child for kindergarten students
- \$2,000 per child for primary school students
- \$3,000 per child for high school students

What items are available?

1. Books and stationery
2. School fees and contributions
3. Uniforms
4. Lunches
5. Camp and Country Week fees



6. Equipment – e.g. sports clothing, musical instrument, computer, iPad
7. School photographs
8. Tutoring
9. Travel & accommodation (boarding school and school bus services only)
10. Extracurricular activities or excursions
11. Bicycles and scooters.

Eligibility

All school aged Gumala Beneficiaries (minors) are eligible for this program if:

- They are going to school (enrolment records may be required)
- Their parent is a registered Member of Gumala Aboriginal Corporation (pending Member's children cannot access funds).

Further information can be found on the GAC website or call the office on 1800 486 252.

2020 Christmas Gift Cards

Gumala's Christmas Gift Card Program aims to provide all Gumala Members and Adult Beneficiaries with a \$500 Coles or Woolworths gift card for Christmas 2020.

For any Members without a Coles or Woolworths store in your nearest town, an alternative voucher will be arranged for you at your local supermarket.

Applications received before 5pm on Friday 20 November 2020 will be delivered by Christmas, and applications received after this date and before 29 January 2021 will be processed and delivered as soon as practicable.

These gift cards must be applied for and only one per Member will be authorised.

All applications for Christmas 2020 gift cards should be sent to xmas@gumala.com.au

For more information about the gift cards, please visit Gumala's website or refer to the Member Program Guidelines 2020-2021.



APPLICATION ASSISTANCE VIA PHONE UPDATE



During the height of the COVID-19 pandemic, GAC staff were able to process applications over the phone for Members who were unable to leave their remote communities or were in isolation with no access to a printer, scanner or email.

Although this type of processing is time consuming and a heavy use of staff resources, GAC deemed this to be of high importance to Members at the time.

GAC has now returned to normal processing procedures but will continue to offer this service to our elderly Members (55+ Years Program) or those in need during a time of crisis.

We would appreciate if all other applications are submitted through our normal channel (via email.)

The Member Services Team has worked hard over the past few months to keep processing days to a minimum and looks forward to working with our Members in the busy few months heading towards Christmas and the New Year.



2020 AGM UPDATE

GAC would like to inform Members that the 2020 Annual General Meeting (AGM) and Member's Consultation Meeting with Rio Tinto Iron Ore has been postponed until early 2021.

Due to COVID-19 restrictions and regulations set by the Western Australian Government, our Corporation is to abide by the COVID Safety Plan developed for public spaces like the Wanangkura Stadium in Hedland where the AGM has been held in the past few years.

Given that our estimated attendance figures for this year's AGM are to be well in excess of 550 people, there are logistical difficulties in requiring staff to ensure attendants adhere to the relevant COVID Safety Plan and the COVID Safety Guidelines.

Further updates about the exact date and location of the AGM will be given in due course.

Telstra Bill Assistance

Did you know that Gumala is able to assist with your Telstra bill?

Telstra Bill Assistance vouchers will be issued to eligible adult Members and Beneficiaries on request, with a limit of one per Member. They are valued at \$50 and can be used towards all Telstra bills, including wi-fi, phone and mobile. They can't be used for credit or recharging.

How to apply? The bill must be in the Member's name. Send a copy of the bill to info@gumala.com.au (NOT applications@gumala). The voucher will be sent from Gumala to Telstra by mail so Members should submit with enough time for processing (at least 2 weeks).

A limited number of vouchers are available so first come, first served. The program expires 30 June 2021.

For more information, contact Carol on 1800 486 252 or email info@gumala.com.au

CONTACT US

TOM PRICE HEAD OFFICE

1 Stadium Road, Tom Price WA 6751

Post: PO Box 28, Tom Price WA 6751

Phone: +61 (0)8 9219 4500 | Fax: +61 (0)8 9188 1846 | Email: info@gumala.com.au

facebook.com/GumalaAboriginalCorporation/

facebook.com/GumalaAboriginalCorporationJobsLink/

www.gumala.com.au

PERTH OFFICE

Level 2, 165 Adelaide Tce, East Perth WA 6004

Post: PO Box 3167, East Perth WA 6892