

# GUMALA NEWSLETTER

March 2021



## LARGE TURNOUT FOR GUMALA'S AGMS

**Gumala would like to thank all of our Members who travelled to South Hedland recently to attend both the GAC and GIPL AGMs.**

With 715 Members registering for GAC's AGM on Saturday 27 February, and 674 Members registering on Sunday 28 February, it is one of the largest turnouts that we have seen.

Our newly introduced Advanced Payment of Travel Allowance, and the ability for Members to register electronically on arrival at the venue, both proved to be popular changes with our membership.

The AGM was deferred from October 2020 due to COVID-19 restrictions and regulations set by the WA Government.

Full details of the newly appointed GAC Board and office bearers can be seen on page 3. More Member photos can be seen on page 4 and 5.



**When reading this publication and sharing it with family and friends, please be mindful that it may contain images and/or names of people who have since passed away.**



# EXECUTIVE OFFICER REPORT



**Thannarru,**  
**On behalf of Gumala Aboriginal Corporation's Directors, I would like to thank all who were able to attend the Corporation's Annual General Meeting (AGM) and Consultation Meeting on Saturday 27 February 2021.**

These meetings were held in South Hedland, home of the Karriyarra people. We thank them for welcoming and hosting Gumala people on their country. We also recognise that not all our Members were able to attend the meetings, particularly Members of the Gumala family who have experienced losses recently. The meeting observed a minute's silence to pay respect to each of your families – our thoughts are with you all.

The Saturday meetings saw approximately 715 Members and Beneficiaries registering to attend, one of our largest turnouts ever. As a result of elections held on the day, there were three changes to the Board as follows:

- Yinhawangka – Pamela Condon was reappointed, Lorraine Injie was appointed, and Gloria Smith retired.
- Banjima – Karen Tommy was reappointed, Michael Gibson was appointed, and May Byrne retired.
- Nyiyaparli – Lisa Derschaw was reappointed, Maurice Narrier was appointed, and Christina Stone retired.

To those who retired their directorships at the AGM, we would like to acknowledge your contributions to the Corporation and your leadership in your years of service.

We would specifically like to acknowledge Gloria Smith who was appointed to the Board in October 2017 and assumed the role of Chairperson in December 2017. Gloria provided leadership and direction to the Board through the process of aligning the three entities under one strategy, clarifying their roles and building relationships for the benefit of the Gumala people – thank you!

Post AGM, the Corporation was guided by Natalie Parker then as Deputy Chairperson transitioning through the onboarding of new Directors and appointments of

executive. As a result, Nola Naylor was recently appointed as Chairperson and we look forward to her continuing to build Gumala and lead it into the future.

There were some questions raised at the meetings that I would like to address here for those Members absent on the day:

- A Consultation Meeting was held with Rio Tinto at which the underpayment of royalties was discussed. This discussion stems from July last year at which time GAC was advised by Rio Tinto that they had identified some discrepancies with the historical payments made under the Yandi Land Use Agreement. As stated at the meeting, discussions with Rio Tinto regarding this payment are continuing. We note the Member feedback delivered at the meeting; we aim to address these with Rio Tinto and hope to finalise the matter as soon as practical.

- During consultation, a number of Gumala Members raised the matter of the Juukan Gorge rock shelter destruction. As stated at the meeting, Gumala acknowledged Puutu Kunti Kurrama and Pinikura's (PKKP) authority in the matter to address the destruction with Rio Tinto and that we continue to support the PKKP in their journey. Ultimately, this is not a matter for Gumala to discuss in respect of PKKP.

- Members raised questions relating to the restructuring of Gumala Enterprises Pty Ltd (GEPL). Specifically, we note that GEPL has removed itself from the Civil and Contracts area and continues to operate Karijini Eco Retreat (KER) and the Tom Price Workshop with further review of the financial performance and benefit to Members. The restructuring is not complete but ultimately, we aim to align the business with objectives of the Foundation.

In April, GAC and GIPL will commence a Housing Survey to better inform Gumala on the Member needs with regards to housing. The data gathered will be de-identified and used to leverage additional funds from the North-West Aboriginal Housing Fund.

We appreciate each and every one of you assisting us to gather this information and to be better informed when designing programs for your benefit.

**by Justin Dhu,**  
**Executive Officer**

# DIRECTORS' TERMS AFTER AGM

**Our Directors are featured on the back cover.**

<b>Yinhawangka</b> Mary Mills <i>Term expiring AGM October 2021</i>  Augustine Allen <i>Term expiring AGM October 2021</i>  Lorraine Injie <i>Term expiring AGM October 2022</i>  Pamela Condon <i>Term expiring AGM October 2022</i>	<b>Banjima</b> Charles Smith <i>Term expiring AGM October 2021</i>  Nola Naylor <i>Term expiring AGM October 2021</i>  Michael Gibson <i>Term expiring AGM October 2022</i>  Karen Tommy <i>Term expiring AGM October 2022</i>	<b>Nyiyaparli</b> Layneisha Sgro <i>Term expiring AGM October 2021</i>  Natalie Parker <i>Term expiring AGM October 2021</i>  Maurice Narrier <i>Term expiring AGM October 2022</i>  Lisa Derschaw <i>Term expiring AGM October 2022</i>
--	---	---

# 25 - YEAR ANNIVERSARY



**Gumala would like to acknowledge that March 23 commemorated 25 years since the first community meeting was held in Youngaleena to start initial discussions around the Yandi Land Use Agreement and the formation of Gumala Aboriginal Corporation.**

This Youngaleena meeting saw Peter Eggleston and other Hamersley Iron (now Rio Tinto) negotiators explain the deal-making process, and was followed by additional meetings at Marillana Creek and Yandi mine before the incorporation of Gumala Aboriginal Corporation took place in Dampier on 22 July 1996.

GAC wishes to acknowledge and pay tribute to the many Elders who took part in these meetings and have made significant contributions over the years to their people and communities.

# NEW OFFICE BEARERS APPOINTED

**Shortly after the AGM, the newly appointed Board of Gumala Aboriginal Corporation met to consider the appointments of office bearers in the positions of Chairperson, Deputy Chairperson and Secretary.**

As a result, the following appointments have been confirmed moving forward:

- Director Nola Naylor has been appointed as Chairperson replacing Gloria Smith who retired from the Board at the recent AGM.
- Director Mary Mills has been appointed as Deputy Chairperson replacing Director Natalie Parker.
- Director Lisa Derschaw has been appointed as Secretary which was previously occupied by Director Pamela Condon.

GAC would like to welcome the newly appointed office bearers and thank our outgoing position holders for their leadership along the Corporation's journey.

We would like to particularly thank Director Natalie Parker who guided the Corporation after the AGM in her capacity of Deputy Chairperson. We thank Director Parker for her leadership in transition to Chairperson Naylor.



# GAC & GIPL ANNUAL GENERAL MEETINGS



# GAC & GIPL ANNUAL GENERAL MEETINGS





# EMPLOYMENT & SKILLS DEVELOPMENT PROGRAM

Our Skills Development Program was introduced to specifically support Gumala Members looking for work and wanting to upskill themselves with the aim of securing employment and/or advancing their career.

The program offers funding (up to \$3,000 per Member) for recognised courses, tickets and licenses that will assist Members to achieve pathways to employment and build on existing qualifications and skills.

So far, our Members have taken up the opportunity to attend courses in the following areas: scaffolding, dogging, rigging, confined spaces, forklift driving, excavator operations, conduct roller operations, HR licences, medical reception, welding, nail technology and much more.

If you would like to learn more about this program and how it may benefit you, please visit our website at <http://gumala.com.au/skills-development/> or call the Gumala office on 1800-486-252 and ask to speak with Hayley who works on Tuesday, Wednesday and Thursday.



## Work Opportunity with AEC

The Australian Electoral Commission (AEC) is hiring 300+ administration assistants nationally to support the lead-up to the next federal election (due in 2021 or 2022).

If you have good organisational and communications skills, a professional attitude and enthusiasm, and are looking for casual work, please go to [www.aec.gov.au/](http://www.aec.gov.au/) employment or contact Hayley in the Gumala office to find out more information.



## Garren on Cloud Nine

Gumala proudly continues to support Members who are seeking employment and skills development assistance.

Garren Smith came to the Gumala office late last year asking for assistance with employment. Our Employment and Skills Development Officer Hayley met with Garren, helped him with his resume and referred him on to several positions within the mining industry.

After an interview and medical assessment, Garren was offered a position with Fortescue Metals Group Ltd (FMG) on a 2 and 1 roster based at Cloudbreak mine in the Pilbara.

The feedback from Garren has been great. He is so happy to be working and appreciates the support and help from Gumala and our Employment and Skills and Development Officer.

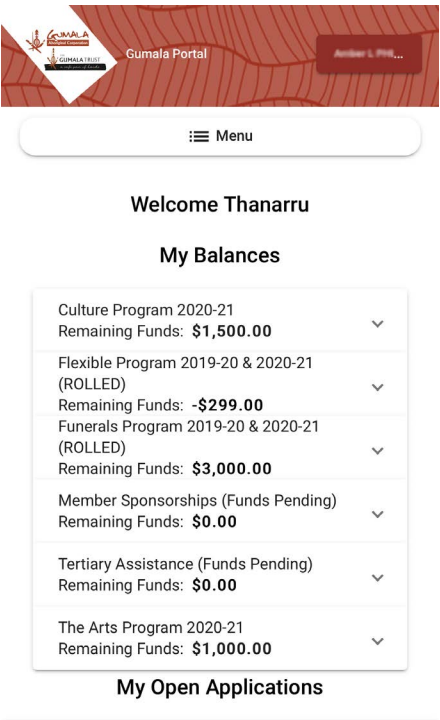
If you would like to learn more about how Gumala may be able to assist you find work, please call the office on 1800-486-252 and ask to speak with Hayley who is available on Tuesday, Wednesday and Thursday.

# NEW MEMBER PORTAL - COMING SOON

## What and Why?

Gumala will soon launch a website portal which will allow Members and Beneficiaries to access their personal information and lodge applications 24 hours a day, 7 days a week.

The portal will sit on Gumala's website, and through this link, Members will be able to easily check their balances, lodge applications, check the status of an application, and keep their personal details up to date.



## Benefits for Members

Some of the main benefits of the portal will be:

- Members will no longer have to wait for Gumala's business hours to enquire about a program balance or check on an application status.
- Members will be able to lodge new applications and track the progress of the application.
- Members will be able to keep their own personal details up to date.
- Members will be able to choose their preferred method of receiving communications like newsletters and annual reports etc.

## What do Members need for portal access?

All Members need to access the portal is a mobile phone, iPad, laptop or computer with an internet connection.

## What do Members need to consider before using the portal?

Before using the portal, Members should make sure that their personal details are up to date.

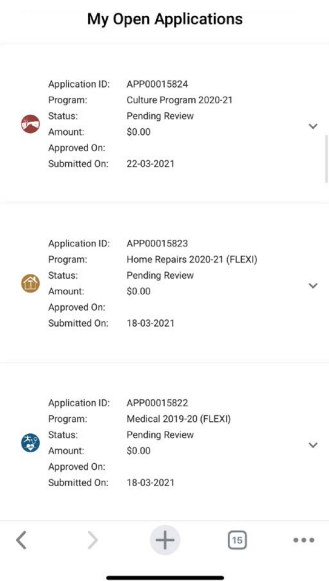
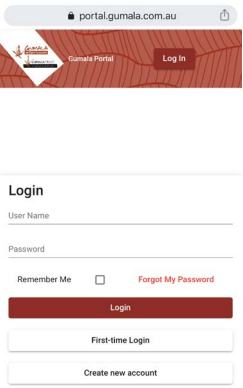
If there are any changes to an email address or mobile number then Members are encouraged to contact the Member Services Team in the Gumala office as soon as possible.

To ensure that personal details are kept secure, it is important that Members do not share their phone or email address with anyone which may allow them to access your information through the Member Portal.

There is a Personal Information Form (PIF) included in this newsletter. This can also be used to update personal contact details and bank account information.

## How do I find out more?

Gumala will be sending out more information to each Member in the near future on how to register for the Member Portal.





# MEMBER PROGRAMS AND SERVICES

## 2021 Education Program reminder

Just a reminder that children of registered Members and Beneficiaries are eligible to access our Education Programs (Kindy – Year 12) for the 2021 school year until **31 October 2021**.

The 2021 Education Programs provide the following amounts:

- \$500 per child for kindergarten students
- \$2,000 per child for primary school students
- \$3,000 per child for high school students

### What items are available?

1. Books and stationery
2. School fees and contributions
3. Uniforms
4. Lunches
5. Camp and Country Week fees



6. Equipment – e.g. sports clothing, musical instrument, computer, iPad
7. School photographs
8. Tutoring
9. Travel & accommodation (boarding school and school bus services only)
10. Extracurricular activities or excursions
11. Bicycles and scooters.

### Eligibility

All school aged Gumala Beneficiaries (minors) are eligible for this program if:

- They are going to school (enrolment records may be required)
- Their parent is a registered Member of Gumala Aboriginal Corporation (pending Member's children cannot access funds).

# 3A PLAYGROUP EARLY LEARNING PROGRAM

This year, Gumala continues to run 3a Playgroups – Early Learning Programs for 0-4 years – in the following locations across the Pilbara: Karratha, Marble Bar, Tom Price, Wakuthuni, Roebourne and Hedland at two different locations. Gumala families are welcome at any of these playgroups free of charge.

More details about the days and hours for each location can be found on our website: <http://gumala.com.au/3a-early-childhood-education-project/> or by calling 9188-4560.

Below is a snapshot of some of the fun and learning that has gone on in Term 1, 2021.



Marble Bar

Above and right: There have been plenty of roadworks happening around Marble Bar lately which is all very exciting. We have been reading books, building train tracks and roads, and digging dirt with some of the machinery that we have seen around town.



Karratha

Above: Children thrive when given regular doses of conversation-rich experiences through conversational reading and 3a learning games.

They develop an eagerness towards these engagements with their parents and carers and grow with confidence in their environments.



Hedland

Mahala is pictured enjoying some conversational reading with one of our parents/guardians.



GUMALA 3A PLAYGROUP ROEBOURNE



Roebourne

Above: Our playgroup sessions are full of fun and are growing bigger each week. We connect with each other and enjoy activities such as baking cupcakes, learning language, being creative, singing, reading and playing games.

FREE BUS SERVICE FROM WAKUTHUNI

Gumala Aboriginal Corporation is trialling a bus service from Wakuthuni to Tom Price every **Thursday**. This service is for Members who have no transport to get into town for shopping, applications or any other business.

**Wakuthuni to Tom Price - 9.00am sharp**  
You need to be at the end of your driveway and wave us down as the bus will not be stopping and waiting

**Tom Price to Wakuthuni - 12 noon sharp**  
Outside of Westpac - the bus will not have time to wait

**Wakuthuni to Tom Price - 12.30pm sharp**  
You need to be at the end of your driveway and wave us down as the bus will not be stopping and waiting

**Tom Price to Wakuthuni – 3.30pm sharp**  
Outside of Westpac - the bus will not have time to wait

There is strictly No Alcohol allowed on the bus



Gumala 3a Playgroups – Early Learning Program 0–4 years



**Karratha 3a Centre**  
10 Hedland Place, Karratha  
Monday to Friday 9.00am – 11.30am

**Roebourne 3a Centre**  
Gurlu Gurlu Maya Child & Parent Centre  
47 Lockyer Way, Roebourne  
Thursday 9.30am – 12pm

**Marble Bar 3a Centre**  
Marble Bar Primary School (art room)  
Augusta Street, Marble Bar  
Monday & Wed 9.00am – 11.30am

**Wakuthuni 3a Centre**  
Paraburdoo Road, Wakuthuni  
Monday to Friday 9.00am – 11.30am

**North Tom Price 3a Centre**  
North Tom Price Primary School  
Tanunda Street, Tom Price  
Thursday & Friday 9.30am – 12pm

**South Hedland 3a Centres**  
Sth Hedland Child & Parent Centre  
1 Weaver Place, Sth Hedland  
Mon & Wed 9.00am – 11.30am

**Lotteries House**  
2 Leake Street, South Hedland  
Tues & Fri 9.00am – 11.00am  
South Hedland Aquatic Centre  
Leake Street, South Hedland  
Thursday 9.00am – 11.30am

**Phone 9188-4560**

All centres operate ONLY during the school term

PAGE 8

PAGE 9





## GUMALA INVESTMENTS PTY LTD (GIPL)

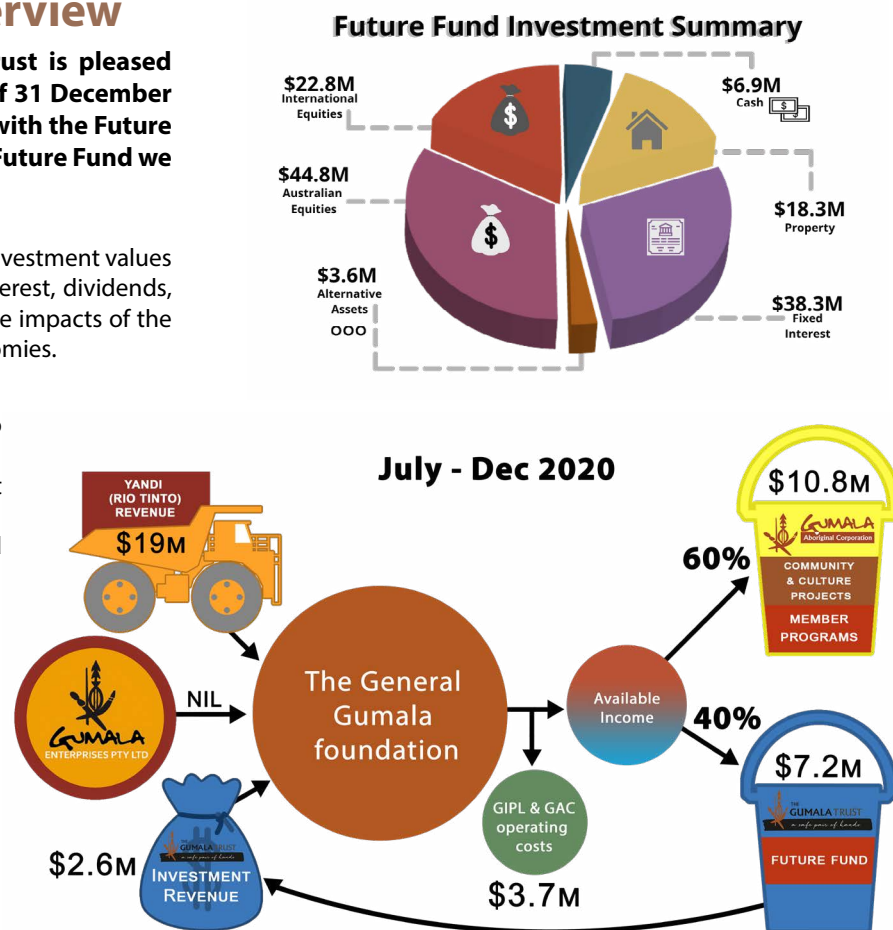
### GGF Financial Overview

The General Gumala Foundation Trust is pleased to update the Beneficiaries that as of 31 December 2020 it had total assets of \$169.1M, with the Future Fund valued at \$137.0M. Within the Future Fund we hold Investments of 134.8M.

The six months to December have seen investment values increase. However, the earnings from interest, dividends, and distributions are still lower due to the impacts of the Covid-19 pandemic on world-wide economies.

Total Revenue for the six months to 31 December 2020 was \$21.6M with \$18.0M being retained for the benefit of Members and Beneficiaries through available Member Program Funding and Investments into the Future Fund.

**Contact GIPL**  
Tel: +61-8-9287-3900  
Fax: +61-8-9325-2660  
Email: [gipl@gumalatrust.com](mailto:gipl@gumalatrust.com)  
Web: [www.gumalatrust.com](http://www.gumalatrust.com)  
Facebook: [facebook.com/GumalaTrust/](https://www.facebook.com/GumalaTrust/)



### GIPL welcomes Arleah & Briana



Arleah is our new Business Administration Trainee. As a Banjima woman, she is excited to work with Gumala, where she can learn more about her family background and culture, while getting a sense of the work environment,



which she loves.

Briana is our new PR & Communications Officer who you might have seen at the recent AGM taking photos, and she designed the banners that were displayed during the GIPL Consultation & AGM.



GIPL congratulates Sarisa Htay, Hima Nyapathi and John Raftis for 5 years with the Gumala Trust.

**GIPL's Member Survey will be running during April. If you have yet to complete the survey, or haven't received an email, please contact GIPL by phone or email us at [surveys@gumala.com.au](mailto:surveys@gumala.com.au)**

## GUMALA INVESTMENTS PTY LTD (GIPL)



This infographic represents 14 priority recommendations from the fourth General Gumala Foundation 5-year-review carried out in 2018. The recommendations have been divided into 4 categories for implementation: Culture Focus; Member Centric; Reporting to Members; and Governance.

### GUMALA FOUNDATION 5 YEAR REVIEW PRIORITIES

#### CULTURE FOCUS

1. Develop a Culture Plan with Traditional Owners, prioritising:
  - Housing
  - Health & Wellbeing
  - Education & Employment
  - Lore & Culture

2. Employ Field Services Officers
3. Create a Cultural Showcase

#### MEMBER CENTRIC

Implement a new member portal and management system, determine principles for being member centric and consolidate websites within limitations of being a charitable organisation

- ✓ More awareness of benefits available
- ✓ Easier access to benefits
- ✓ Better understanding of benefits utilised
- ✓ Better understanding of social impact

#### REPORTING TO MEMBERS

1. Develop a Foundation Performance Management Visual Dashboard for the Annual Reports and regular member communications
2. Develop 2021-2025 Strategic Plan
3. Develop Operational Plans for each of the three entities in the General Gumala Foundation (GGF):
  - Gumala Aboriginal Corporation (GAC)
  - Gumala Investment Trust (GIPL)
  - Gumala Enterprises (GEPL)
4. Standardise Foundation Reporting

#### GOVERNANCE

1. Develop board competency program including:
  - cultural awareness training
  - governance training
2. Investigate combining the reviews of the Yandi Land Use Agreement (YLUA) & Trust Deed

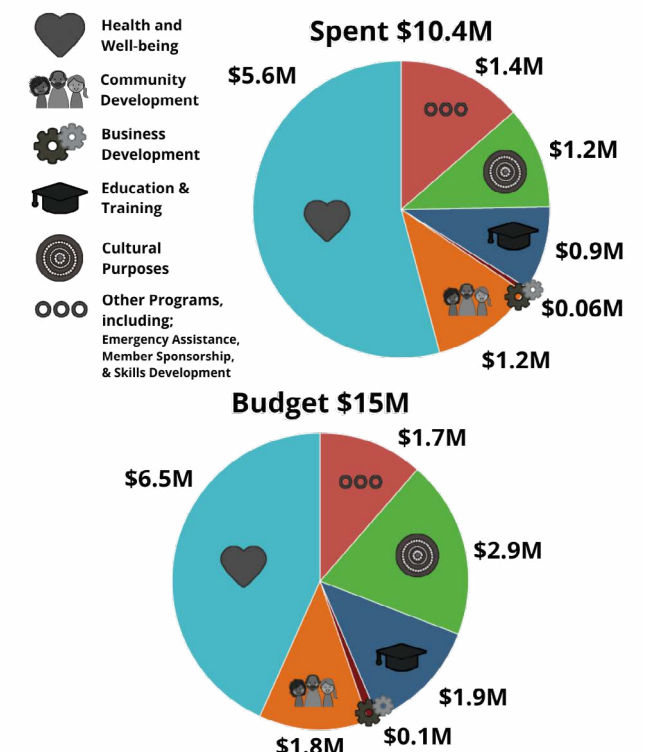
In total there were 32 recommendations. These were prioritised at joint strategy meetings between GAC, GIPL and GEPL Boards to identify those recommendations that would deliver the most desired outcomes for Members and operational efficiencies.

The 14 prioritised recommendations are either Delivered & Ongoing, In Progress, or Pending, with full details provided in the back of the GIPL Annual Report, which can be found on GIPL's website.

Project Consultant, Kyla Morrison, has been tracking progress on implementation of the recommendations and provided an update to Members at the GIPL consultation meeting prior to the AGM on 28 February 2021.

One of the recommendations was to improve reporting to Members to improve understanding of program benefits available and how these are being utilised. We will be releasing performance charts, such as the one below, quarterly.

### The Gumala Foundation Program Funding Sep-Dec 2020





# MEET THE NEW GAC BOARD

BANJIMA



Michael Gibson



Charles Smith



Nola Naylor  
(Chairperson)



Karen Tommy

YINHAWANGKA



Lorraine Injie



Mary Mills  
(Deputy Chairperson)



Augustine Allen



Pamela Condon

NYIYAPARLI



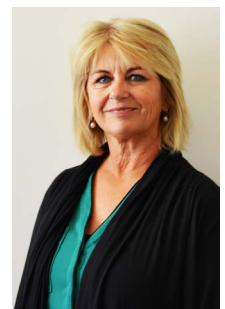
Natalie Parker



Layneisha Sgro



Maurice Narrier



Lisa Derschaw  
(Secretary)

## CONTACT US

### TOM PRICE HEAD OFFICE

1 Stadium Road, Tom Price WA 6751

Post: PO Box 28, Tom Price WA 6751

Phone: +61 (0)8 9219 4500 | Fax: +61 (0)8 9188 1846 | Email: [info@gumala.com.au](mailto:info@gumala.com.au)

[facebook.com/GumalaAboriginalCorporation/](https://facebook.com/GumalaAboriginalCorporation/)

[facebook.com/GumalaAboriginalCorporationJobsLink/](https://facebook.com/GumalaAboriginalCorporationJobsLink/)

[www.gumala.com.au](http://www.gumala.com.au)

### PERTH OFFICE

Level 2, 165 Adelaide Tce, East Perth WA 6004

Post: PO Box 3167, East Perth WA 6892