

GUMALA NEWSLETTER

June, 2019



Images courtesy of Ngaarda Media

KARIJINI EXPERIENCE

Gumala was proud to be a Gold Sponsor of the 2019 Karijini Experience. The event, now in its seventh year, was held between 16-21 April. It was hosted by the Nintirri Centre and run in partnership with the Bunjima Native Title Aboriginal Corporation.

The Karijini Experience began in 2013 as a dinner for 75 people at the Eco Retreat to start a conversation about experiencing Karijini National Park and the inland Pilbara. It has since grown to become a major event which promotes the region's cultural values and environmental beauty.

A Welcome to Country and dancing by Bunjima Traditional Owners was part of the official opening. This was followed by a host of experiences that included: bush culture and ancient rock walks; Gina Williams and Guy Ghouse singing in the gorge, along with the WA Symphony Orchestra; Bunjima tool and weapon making; story time and ecology talks; a bush tucker cook up as well as a Fervour degustation (ocean to forest to desert), and a line-up of local and national musicians; Dan Sultan closing the event.

As part of the festivities, Director May Byrne, who is a Bunjima Traditional Owner, read from her book *Milyuranba Bunjima*.



Image courtesy of Sarah Kemp

When reading this publication and sharing it with family and friends, please be mindful that it may contain images and/or names of people who have since passed away.



Thannarru,

We are looking forward to exciting times as well as challenges as we close out the 2018-19 financial year.

Over the past few months we have tried hard to engage with Members through our consultation survey, specifically around the programs that are delivered to Gumala Members and Beneficiaries. A snapshot of the outcomes can be seen on pages 4 and 5, and will be further addressed in the release of the 2019-20 Member Guidelines.

While we have been able to implement some of the recommendations to come out of the survey (e.g. the introduction of food vouchers under the Healthy Living Program), we still have the challenge ahead of designing programs and processes that benefit each of your individual needs. We are committed to receiving your continual feedback and, in consultation with Gumala Trust, aim to deliver better program outlines.

In previous years we allocated set amounts of money under each of the program headings, but the flexible program structure allows Members to plan and use benefits

EO Report

that best suit their families and priorities. The Healthy Living program under the flexible model has been identified as the most popular but it does require each of our Members to exercise appropriate budgeting in order to meet their individual and family needs for the duration of the financial year. In saying that, GAC is happy to help any Members who need clarification about the structure of this program so that they can make the most of their allocation.

In other news, the recommendations of the Foundation Review are in the process of being understood and discussed. Alinio Pty Ltd, the review facilitator, has presented to both the GAC and GIPL boards who are currently planning an implementation and communication structure that will bring Members and Beneficiaries along the journey over the next five years. In this time, GAC will hopefully refine service delivery in line with Member expectations and communicate the milestones as we achieve them or the challenges as they occur along the way.

In the near future, the boards of GAC, GIPL and GEPL will meet to discuss responses to recommendations made by the foundation review and work on this five-year strategy. We look forward to bringing you more information in the future.

Justin Dhu, Executive Officer

Meet Gumala's new Pilbara 3a Coordinator

Denise Dann officially joined the Gumala team in March to become the new coordinator of the 3a early childhood program.

She is based in Karratha but will service the Gumala 3a Centres across the Pilbara region which are located in Wakuthuni, South Hedland, Marble Bar, Roebourne and Warralong Community, as well as Karratha.

Since starting with Gumala, Denise has been busy meeting key stakeholders to support the program and has developed relationships with KindiLink in Roebourne and Wirraka Maya Health Service Aboriginal Corporation in South Hedland to target vulnerable families.

Denise was born and raised in Port Hedland and is a proud Bunjima women with two children. Her background and work history is in administration and community service, with her most recent role

being a Field Officer for IBN for the past five years. Denise has also sat on a number of boards which have expanded her knowledge and understanding of good governance. We welcome Denise to our team.

More 3a updates are available on Page 8.



Our Gumala Members in the Spotlight

It is wonderful to hear about the successes of our Gumala family both nationally and overseas. If you have a story that you would like to share, please feel free to contact us.



Two young Port Hedland baseballers were recently sponsored by Gumala to take part in an international competition in Singapore.

Kayden Dann (14) plays for Hedland baseball club Pirates in the men's reserves team, whilst his younger brother Tyler (11) plays for the Hedland Reds Little League.

In November 2018 the boys attended tryouts in Perth and from these were selected for the under 13s Perth Allstars baseball team to play in the Southeast Asia Youth Baseball and Softball Tournament (SEAYBST).

In March the Danns travelled to Singapore where the boys played against the local side as well as teams from Dubai, Jakarta and Manila. Tyler said he loved the opportunity to be a part of the SEAYBST tournament, seeing Singapore and experiencing its culture, and Kayden said he loved competing against other countries, and seeing how people live in a big city like Singapore.

"Thank you Gumala for sponsoring the boys and helping give them and our family this amazing opportunity as it's opened their eyes to what's out there and allowed us to experience another culture," said the boys' mother Anthea Corpus.



* Fun fact: 17-year-old WA baseballer Jack Bowin, who also grew up in Hedland, was recently signed by the American Major League Baseball club the Boston Red Sox (the reigning baseball World Champions).

Niyaparli Member Leonie Honeychurch recently contacted Gumala to share a big achievement of her daughter, 15-year-old Kiara Honeychurch.

Kiara's first picture book published

In the bush I see



In March Kiara had her picture book *In the Bush I See* published by Magabala Books, the oldest independent Indigenous publishing house in Australia.

Kiara lives with her family in rural Tasmania near Hobart where she attends high school. She is following in the footsteps of her sister, Niyaparli Member Bronwyn Houston, who has also had several books published with Magabala.

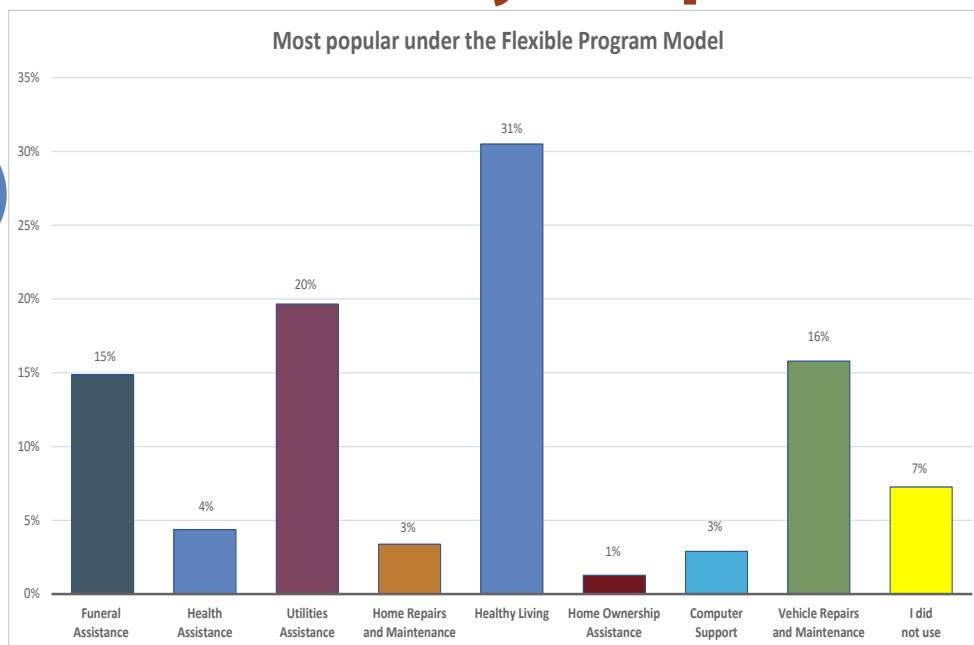
In the Bush I See is part of the Young Art Board Book series and features illustrations Kiara has done of the bush creatures she encounters in her rural home. Kiara is dedicated to developing her craft as a free form and digital artist and we look forward to seeing more of her work in print in the future.



Consultation Survey Snapshot

31%

...voted Healthy Living as the most popular program!

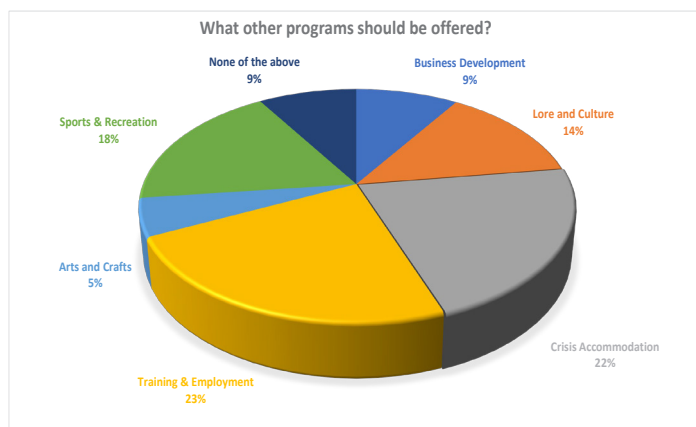


Thank you for your feedback!

GAC would like to thank those Members who took part in the consultation survey held in April. The purpose of the survey was to seek feedback on the Flexible Program Model in order to ensure our programs are meeting the needs of our Members moving into the next program year. The survey was completed by 840 participants, which is approximately 52% of our Membership.

We asked Members: **What other programs should be offered under the Flexible Model?** The top answers were:

1. Training & Employment
2. Crisis Accommodation
3. Sport & Recreation
4. Lore & Culture.



Healthy Living

Why are people finding Healthy Living useful?

- A broad range of assistance available under Healthy Living.
- Less restrictive, more flexibility.
- Huge help with things like furniture, rent, fines and white goods.
- Helps reduce stress and improve standards of living.

Anything you want that you can't get under the flexible program model?

34 % - Yes

66% - No

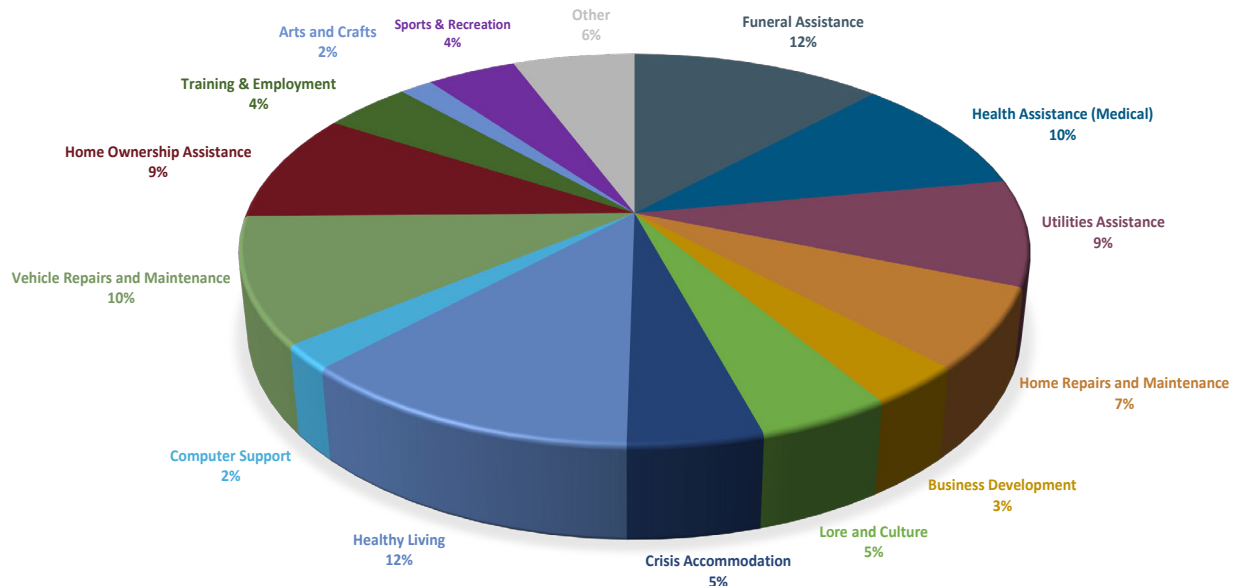
Things people need but can't get: Food Vouchers



Note: the GAC Board has committed that food vouchers will be available under the Healthy Living guidelines under the Flexible Program model for 2019-20.

Consultation Survey Snapshot

What programs would you like a separate pool of money for?



Separate Pool of Money

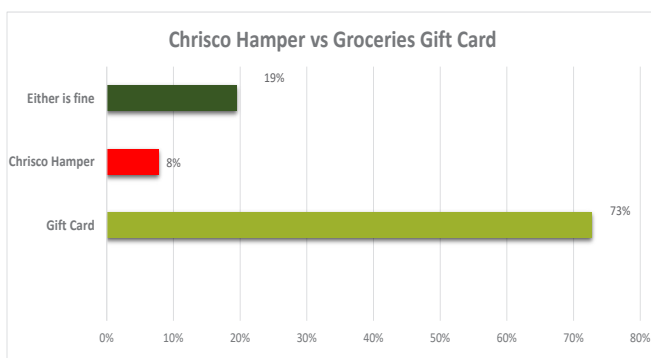
Almost 60% of survey participants think some programs should be separate. The top programs that people think should be separate are:

1. Funerals
2. Healthy Living
3. Medical
4. Vehicle Support.



Christmas Gift Cards

We asked Members if they preferred the groceries gift card or the food hamper at Christmas. 73% voted for the Christmas gift card.



Education Assistance

The survey results showed that Members feel the funds for education assistance for children are not enough, and they want to be able to access support for extracurricular activities such as sport or music lessons. They also want to be able to pay for school lunches.

Members also gave feedback that the number of documents needed for access to education assistance is too much.

Note: the GAC Board has made increases to the education assistance programs for 2019-20, and has responded to the feedback around extracurriculum activities and lunches.

The Board is also committed to making the process for applying easier for families and so attendance records will no longer be required. Enrolment records will only be requested if the payment is not going directly to the school.

More information available soon in the new Member Program Guidelines and on the GAC website.



MEMBER PROGRAMS AND SERVICES UPDATE

End of Program Year 2019

We would like to advise all Members that the 2018-19 programs will close on 30 June 2019 (excluding Education Assistance for school-aged minors). After this, any unspent money will no longer be available. It does NOT roll over.

Please ensure that all applications are submitted to applications@gumala.com.au by **Friday 21 June 2019** to guarantee processing before 30 June 2019. All required documents must also be submitted by this time (eg. invoices).

The GAC Member Services team will be working very hard to have all program applications processed by the end of the program year. Your patience and cooperation during this anticipated busy period are appreciated.

Important reminder as we head into our busy period

Member Services is heading into the busiest time of the year (June – September) with the close of one program year and the opening of another.

GAC staff will work hard to ensure applications are processed within seven business days, and kindly remind Members that during the course of providing assistance, that all Members are expected to:

- Complete application forms fully;
- Provide acceptable quotes and invoices, or other supporting documentation in support of applications;
- Are respectful and courteous to staff and suppliers;
- Will only communicate with GAC staff through approved business methods (phone or email); and
- Will not engage in any fraudulent behaviour or forgery.

Members welcome upgrade



Pictured is Business Admin Trainee Brandon Cook.

GAC's Head Office in Tom Price was recently upgraded to include a user-friendly reception counter where Members can sit in comfort to complete applications, documentation and have access to a phone to contact agencies.

The feedback from Members so far has been very positive.

The Tom Price office is a great space for Members to complete a job application, do homework/uni work or read some of our books. We are open Monday to Friday between 8.30 and 5pm, except public holidays.

TOM PRICE

NAIDOC DAY SATURDAY 29 JUNE 2019

TOM PRICE YOUTH CENTRE AND NINTIRRI NEIGHBOURHOOD CENTRE
10.30AM - 12.30PM

VOICE TREATY TRUTH
Let's work together for a shared future

- Free Bus Service
Pick and drop off Wakathuni and Area W
10.00am Pick Up Wakathuni, 10.30am Pick Up Area W.
Children under 8 need adult supervision
- Traditional Cooking
- Red Dirt Reptiles
- Kids Activities
- Cultural Displays

ALL AGES

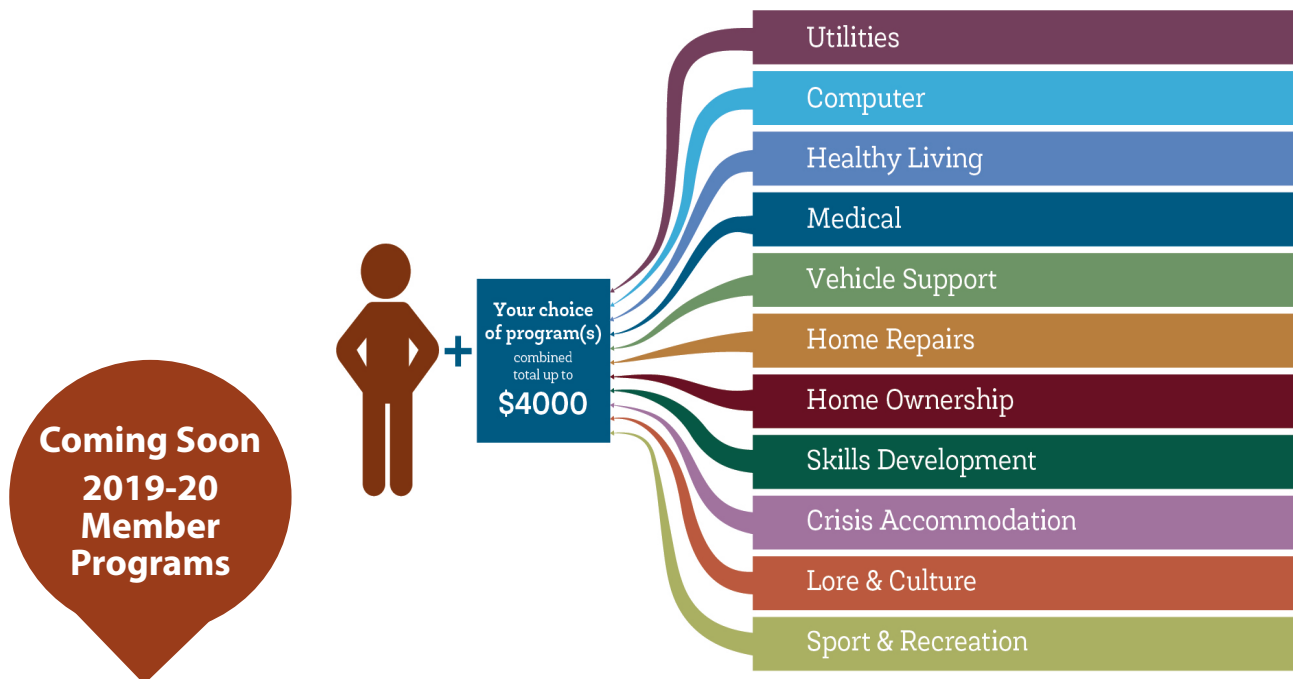
FREE COMMUNITY EVENT

For more information: **Zoe Air 08 9190 2222**
Email: tpeventsandactivities@ashburton.wa.gov.au
www.ashburton.wa.gov.au

WORKING TOGETHER FOR THE COMMUNITY

shire of Ashburton **Rio Tinto** **TPYSA** **MISSION AUSTRALIA** **IBN** **Red Dirt** **VOICE TREATY TRUTH**

MEMBER PROGRAMS AND SERVICES UPDATE



The 2019-20 Member Program Guidelines booklet will be released in late June 2019, ahead of the launch of these programs in July. Here is a snapshot of what can be expected:

- More programs under the Flexible Model (\$4,000 per Member)
- Funerals as a separately funded program for all Members (\$1,000 per Member)
- Education Assistance
- Tertiary Assistance
- Christmas Gift Card (\$500 per Member)
- Community Sponsorships, Emergency Assistance and Job Seeker Services.
- Other important changes to our application process that will hopefully make things a bit easier for people include:
 - New and improved forms (new forms will be released for 2019-20; please ensure you are using the new forms once they are released;
 - No more attendance records for Education Assistance;
 - Food vouchers will be available under the Flexible Program; and
 - No more proof of vehicle ownership documents.

3A PROGRAM UPDATES



Karratha 3a ex-facilitator Suzie Powell with children in the newly refurbished playground.



It's fun in the sun once more at Gumala's 3a Centre in Karratha following the refurbishment of the outdoor playground.

Gumala and Education Department staff met recently to review the upgrades and discuss future funding opportunities for the 3a program.

3a staff also recently took part in the Pilbara Early Childhood Education and Care Conference which brought together 150 workers from across the region to discuss topics ranging from play-based learning to mental health.

Amongst those who participated were Rekinda-Lee Yarran and Larissa Thompson from the Hedland 3a Centre. Although their roles as Family Engagement Officers still include 3a facilitation, the staff are now also working to target both mental and physical health issues of families at the women's refuge and alongside Wirraka Maya Health Services within the local community.



Bayton West Primary School Principal Lisa Ledger, Gumala's 3a Coordinator Denise Dann and Pilbara Regional Education Office Executive Director Cheryl Parkin.

COMMUNITY DEVELOPMENT UPDATES

GAC's Community Projects Coordinator Shane Seers has reported that through a joint working group with Mingullatharndo Community, FMG and GAC, water has been found in a new bore sunk at the Mingullatharndo Community recently.

Although still waiting for confirmation that the water is potable, Shane said that all indications at this early stage are that the water should be suitable to be consumable even if reverse osmosis is required and then it can be the main source for all the homes and accommodation at the community.

"It has been too many years since the homes and residents have had potable water for drinking. Members have had water for domestic washing and showering but have been required to carry water to their homes for drinking.

"With this water source it is proposed that the community should be able to hold up to six or more days water."

Shane said that the positive outcome can only improve conditions for the people who live and visit the community, and for their vision to restore the onsite commercial nursery facility.

"We hope that after all the years that the community has waited, this project ends with a wonderful outcome - water that can be drank without fear of getting ill."



Driver training support continues



Gumala's Tom Price office continues to regularly host the Bloodwood Tree Association staff when they visit the town to help community members wanting to learn how to drive. Bloodwood assists with learners permits, theory tests, driving lessons and much more. Congratulations to Carl Williams who recently received his Learners Permit. He is pictured here with Bloodwood instructor Tanya Holman.

Yarn groups in Wakuthuni

Gumala is supporting Wakuthuni in the development of separate Men's and Women's Yarn Groups via the Dream it Forward grant.

The Women's Group has been busy with projects like curtain making and the Men's Group will be creating woodwork projects, repairing broken furniture and taking on activities like stripping car parts. The aim is to engage long-term unemployed in training activities and to build life skills. Please contact the Tom Price office for more details on 1800 486 252.





Employment

Gumala Enterprises welcomes aboard Sarah Brine as its new HR Manager. Sarah has broad experience across all areas of HR, particularly in regards to the construction industry.

GEPL is always keen to hear from Members who are qualified on rollers, dozers, excavators, water carts, trucks or loaders or are keen to take up training opportunities. Please email your resume to recruitment@gepl.com.au or call us on (08) 6243 2600.

Site Visit

GEPL's Aboriginal Engagement Coordinator Peter Taylor recently visited our various project sites to meet with our many new employees. Peter provides mentoring to GEPL's Aboriginal employees, particularly those new to the company.



Mark Stansfield, Peter Taylor and Peter Kent at RTIO Bina Bina Project site.

Karijini Eco Retreat

April was a very busy month in Karijini, with the Easter school holidays and the highly anticipated Karijini Experience attracting guests from far and wide. The event was a huge success with thousands of people attending the various events, workshops and performances across the park's many venues. The general feedback from guests at the Eco Retreat was that it was a fun-filled and enjoyable event.

Current Projects

RTIO – West Angelas Deposits C & D Enabling Works

The project team has been on site now for 16 weeks. The construction camp pads, bore lines and access tracks have been completed. Turkeys Nest construction is ongoing and the main works for the 6.5km LV20 access road has commenced. Phase 1 works are planned to be completed by the end of May.

RTIO Bina Bina Works

GEPL has received further works from RTIO which will run until October 2019. The works will comprise land clearing and topsoil stripping.

RTIO – Phil's Creek Land Bridge – Stage 2

The project is nearing completion with the site team meeting the client's expectations. Key milestones over the period have been the relocation of overhead powerlines, relocation of dewatering infrastructure and installation of a drop structure to reduce flood water velocity. Completion is scheduled for mid-June.

RTIO – Yandi Shutdown Works

GEPL has supplied plant and labour to the Yandi mine site to facilitate shutdown works over February, April and May.

RTIO – Yandi Culvert Installation

GEPL has been successful in the award of a further portion of works associated with the culvert install completed in January 2019. The additional scope involves bulk earthworks, rock armour, corrugated steel pipe installation and LV access ramp construction. Works commenced in April and are expected to be completed in late May 2019.

RTIO – Paraburdoo – Down Hill Haulage Road Upgrades

In late February, GEPL was awarded a contract to carry out works associated with the upgrade of mine haul roads within the Paraburdoo mine site. The project is expected to be completed in mid June.

RTIO – Hope Downs 1 – Screening and Load Out

GEPL has been successful in securing a contract with RTIO at Hope Downs 1 for the supply of plant and labour to undertake screening and load out activities. Works commenced in April with forecasted completion scheduled for July 2019.

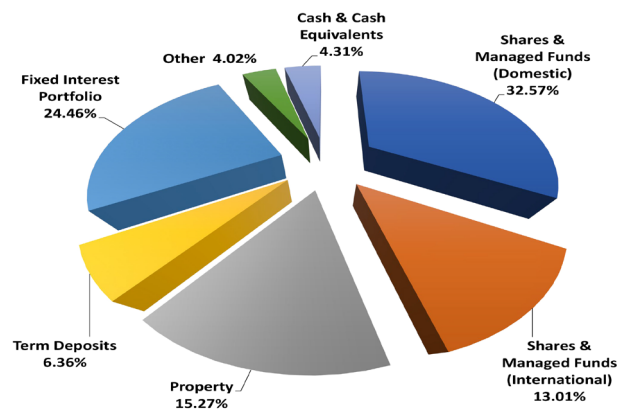
GUMALA INVESTMENTS PTY LTD (GIPL)



The Gumala Trust (GIPL) would like to congratulate Gumala Beneficiary David Moses Martin who took ownership of his home in South Hedland in March. David took advantage of the opportunity offered by GIPL last year for Beneficiaries to purchase Gumala investment houses. The GIPL Board is keen to see more Beneficiaries obtain their own homes and will consider sales of its residential properties in Tom Price and South Hedland to Beneficiaries. The available properties in Tom Price and South Hedland are listed on the GIPL website.

GGF Investments Update

Gumala Investments: Current Asset Allocation



Charity Fact Sheet

Is the Gumala Foundation a registered charity?

Yes. The Gumala Foundation is recognised as a Public Benevolent Institution (PBI), often referred to as a not-for-profit (NFP) organisation. A PBI is a charity whose main purpose is to relieve poverty, sickness, suffering or disability.

What are the benefits of being a charity?

A charity is not taxed on the income it generates or on its investments – which means that there is more money available for the Gumala Foundation to provide to the Beneficiaries.

Given that the Gumala Foundation is able to use this helpful tax concession, the Trust Deed must be observed and upheld, or the Foundation may lose this benefit. In order to remain eligible for this tax concession, all charities must remain NFP and continue to pursue their charitable purpose/s.

More questions about the Gumala Foundation being a charity are answered on the Trust's website.

Contact GIPL:
08-9287-3900
gipl@gumalatrust.com
www.gumalatrust.com

The General Gumala Foundation Trust wishes to update the Beneficiaries that as at 31 March 2019 it had total assets under investment of \$114.80M, with the Future Fund valued at \$106.6M. The investment portfolio continued its recovery of value in the March quarter after negative fluctuations during the first two quarters, highlighting the benefits of the long-term investment outlooks undertaken by the Trust investment managers, operating in accordance with the Trust Deed.

Total Revenue for the nine months to 31 March 2019 was \$23.31M with \$19.40M being retained for the benefit of Members and Beneficiaries through available Member Program Funding and Investments into the Future Fund. In addition to the YLUA land use payments being the highest year-to-date payment since 2012/13, investment income from dividends, distributions, interest and rent are ahead of budget and up in comparison to last year.

This is matched with GIPL and GAC also maintaining their Operating Costs under budget for the nine months and continuing to work together to ensure the maximum benefits for Members, both in the short-term through program funding, and the long-term, through additional investment income, from the revenue above budget.

NOONGAR MUSICIANS VISIT WAKUTHUNI



Following their performance in the Kalamina Gorge at this year's Karijini Experience with the WA Symphony Orchestra, award-winning Noongar musicians Gina Williams and Guy Ghose took time out to visit Wakathuni.

The musicians sung songs in rare Noongar language to community Members at the Gumala 3a Centre. Thank you to the Nintirri Centre for its kind sponsorship of the event for the community.



TOM PRICE HEAD OFFICE

1 Stadium Road, Tom Price, WA, 6751

Post: PO Box 28, Tom Price, WA, 6751

Phone: +61 (0)8 9219 4500 | Fax: +61 (0)8 9188 1846 | Email: info@gumala.com.au

facebook.com/GumalaAboriginalCorporation/

facebook.com/GumalaAboriginalCorporationJobsLink/

www.gumala.com.au

CONTACT US

PERTH OFFICE

Level 2, 165 Adelaide Tce, East Perth, WA, 6004

Post: PO Box 3167, East Perth, WA, 6892